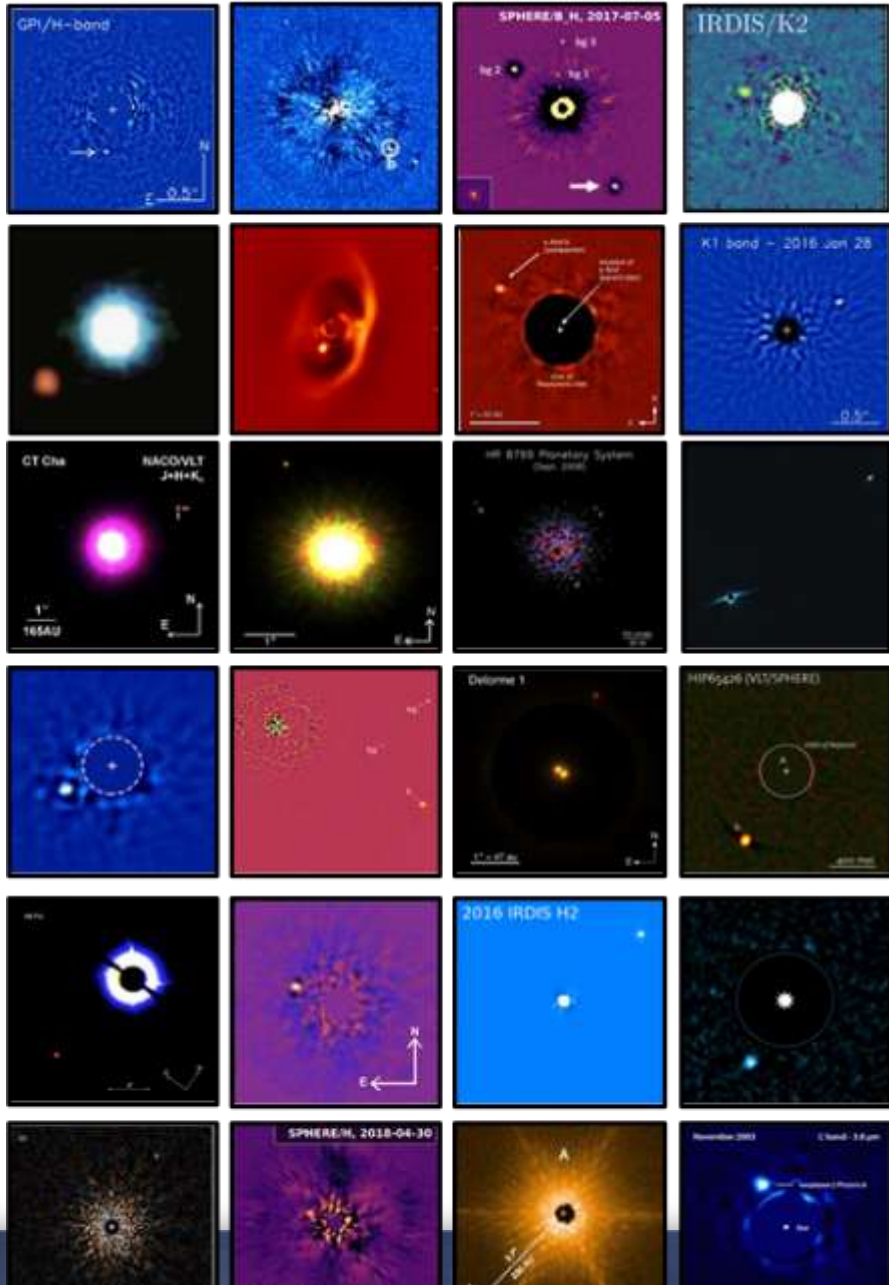




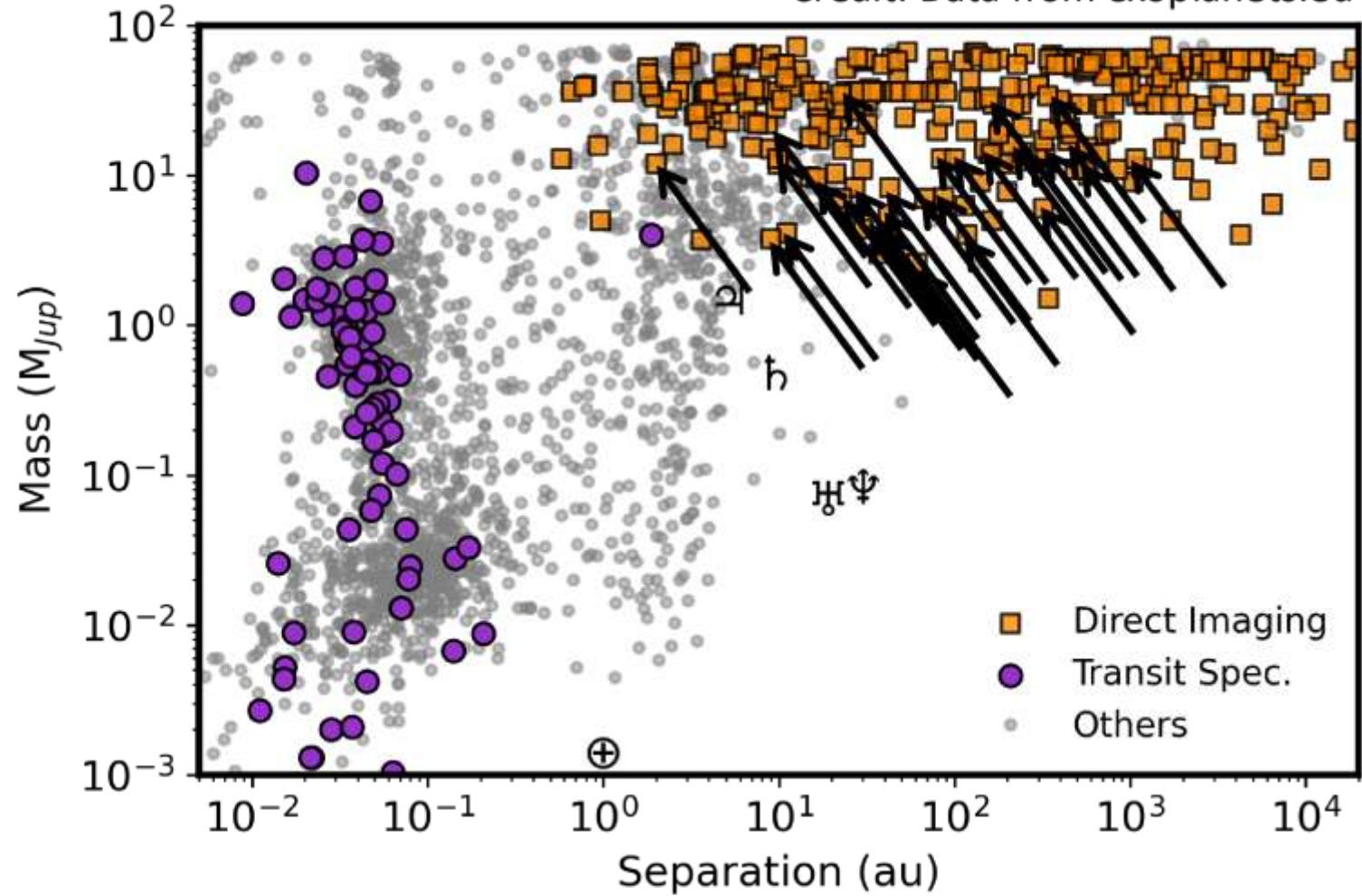
Accelerating atmospheric characterization with optimal estimation

Paulina Palma-Bifani, Benjamin Charnay, Jeremy Leconte, Alice Radcliffe, Bruno Bezard et al.

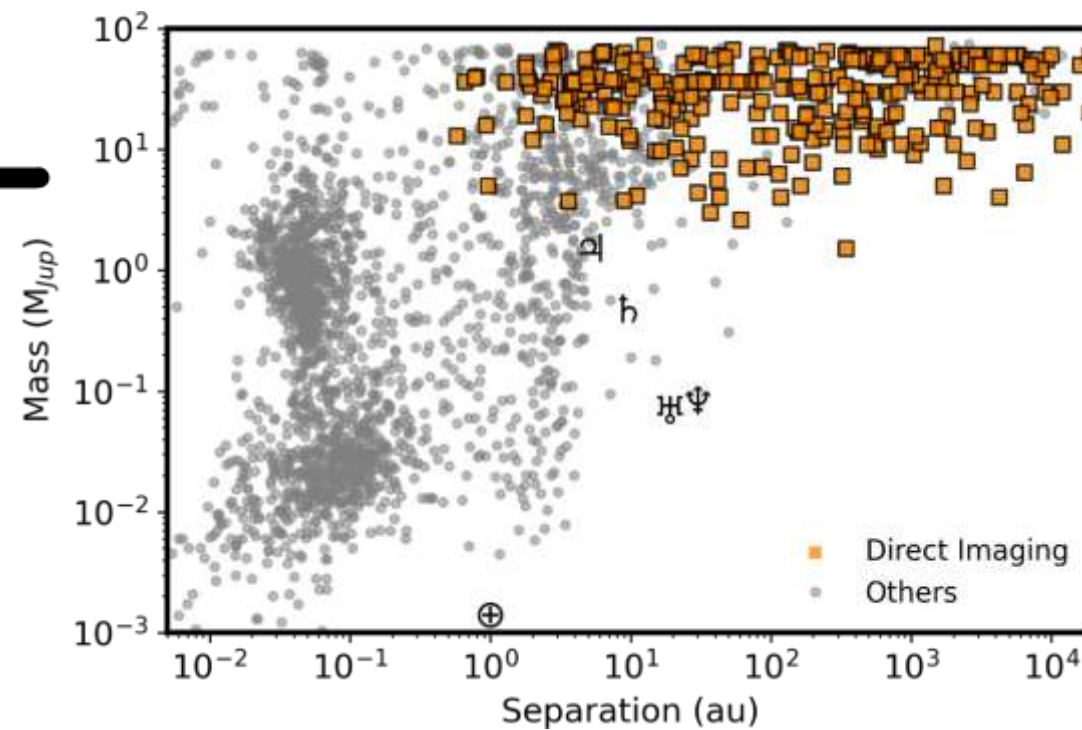


Macintosh et al. (2015),

Credit: Data from exoplanets.eu

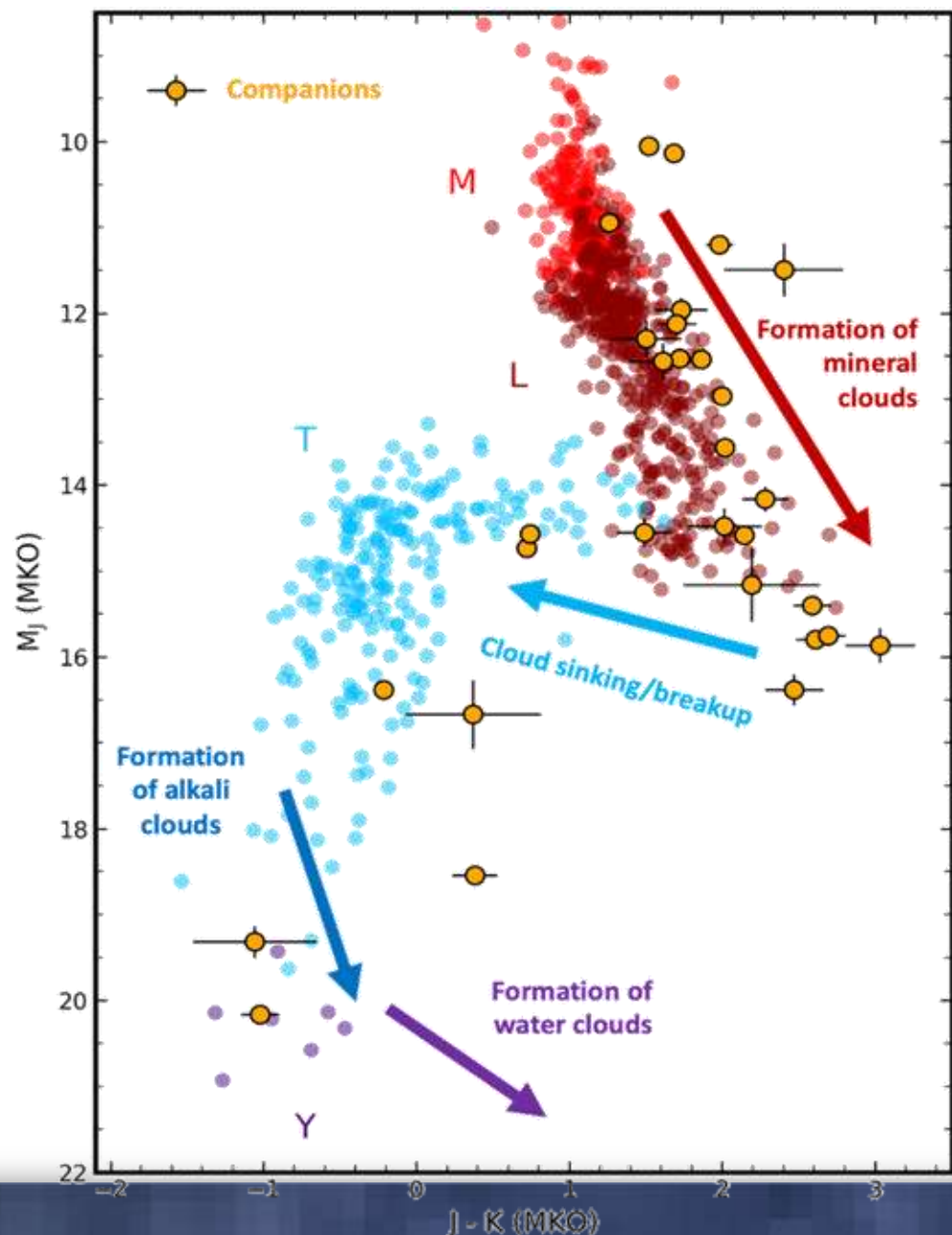


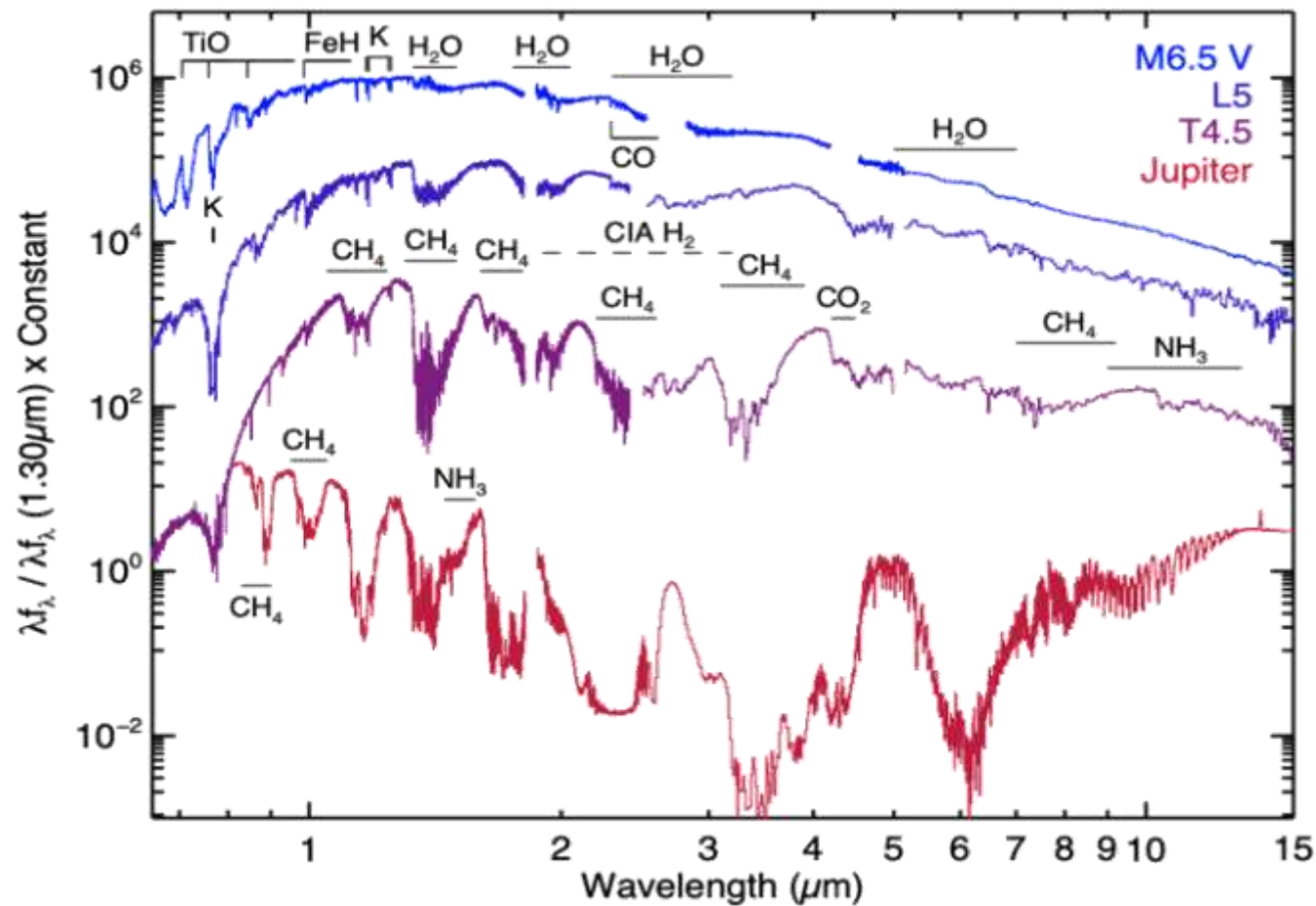
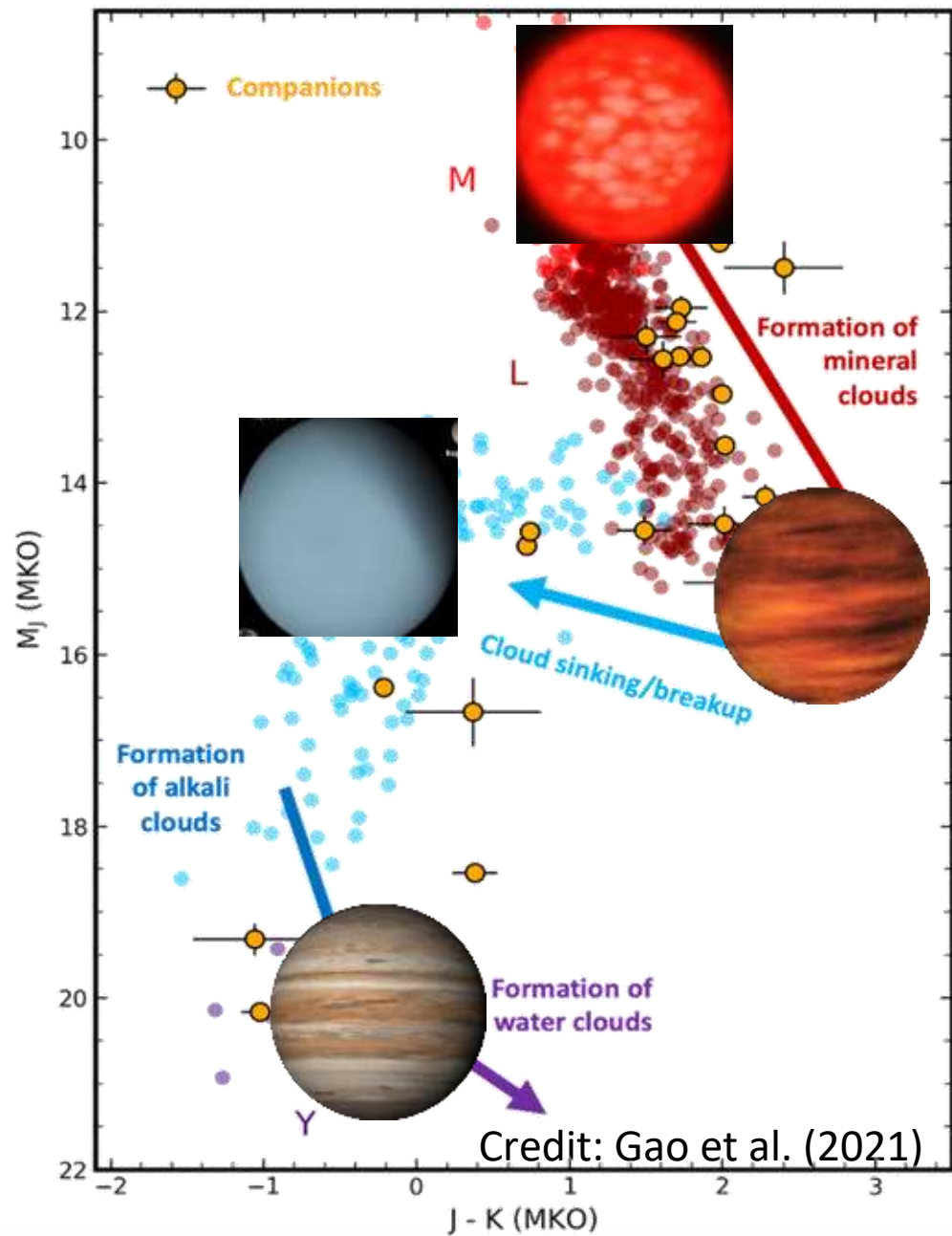
Chauvin et al. (2004, 2005, 2017),
 Lafrenière et al. (2008),
 Marois et al. (2008, 2010),
 Lagrange et al. (2019),
 Nowak et al. (2019),
 Rameau et al. (2013),
 Kurzawa et al. (2013),



Keppler et al. (2018),
Cheetham et al. (2018),
Milli et al. (2017),
Wagner et al. (2021),
Squicciarini et al. (2022),
Janson et al. (2019, 2021),
Bohn et al. (2020, 2021a, 2021b),
de Rosa et al. (2023)

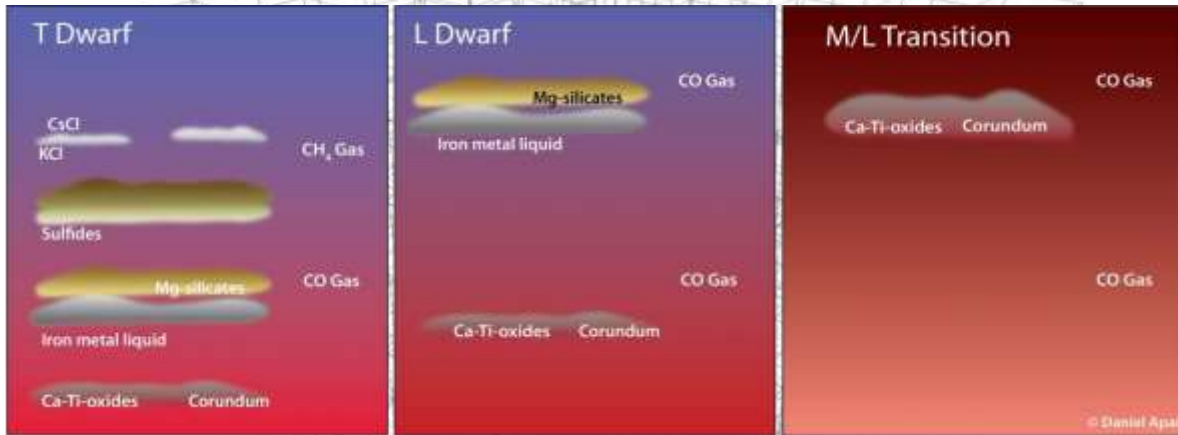
Credit: Gao et al. (2021)





Credit: J. Fortney (2018)

Atmospheric parametrizations for self consistent models:



Temperature
 Surface gravity
 Metallicity ($[M/H]$)
 Abundances ($X_A T X_B$)
 Clouds, ...

Grids: Exo-REM, Sonora, BT-Settl, ATMO, ...

Exo-REM k26

(Radcliffe et al. 2026)

